



# ASA INDUSTRIES

## ABOUT US

ASA Industries, started as a family business in 1985 is now an Industrial expert in manufacturing of Stamped and Die-Casted components of Electric motor core and Ceiling fan covers. Our current product range currently caters to the Ceiling fan and home appliance industry and our recent upgrades and state of the art manufacturing facility extend our capabilities far beyond.

Delivering Excellence  
Since 1985



## AREAS WE SERVE

### DIE CASTED COMPONENTS

We possess wide range of up 250 tons pressure Die casting machines which enable us to manufacture high quality and precise components. We also possess in-house capabilities of Die & Mould design & fabrication which enable us to develop components in minimal lead time.



Front

Back

### SHEET METAL COMPONENTS

Our other Sheet metal components include fan covers available in various dimension and sheet thicknesses with excellent surface finish.

We offer semi-finished and fully finished components as per customer requirement.



### SHEET METAL COMPONENTS

<b>Product</b>	Fancover
<b>Sheet Thickness</b>	1-2 mm
<b>Outer Diameter</b>	189 mm Max
<b>Applications</b>	Ceiling Fans

## STAMPING & DC ROTOR SINGLE PHASE INDUCTION MOTORS

Single Phase induction motors are most common types of motors used for various applications such as Pumps Compressors, Small Fans etc.

FEATURES: Auto Stitch, Numerous slot peripheral geometries, Resistance Lamination

### COMPRESSOR STAMPING

Rotor internal diameter under ten microns without machining



tc-optx stator



thk stator



tc-optx rotor



thk rotor

### COOLER KIT

	Stator	Rotor
<b>Stack Height</b>	Up to 55 mm	
<b>Internal Diameter</b>	62.6 mm	12.7 mm
<b>Outer Diameter</b>	110.5 mm	62.6 mm



Cooler kit Stator



Cooler kit Rotor

Available in both flat & Round Profile



12-Pole-A Stator



12-Pole-B Stator



14-Pole-U Stator



14-Pole-A Stator



14-Pole-B Stator



Wider Slot Stator



12-Pole-A Rotor

### CEILING FAN STATOR & ROTOR DIMENSIONS

	Stator	Rotor (45 Slot)	Die-Casted Rotor (Al. Ring)	Leg Rotor (Al. Ring)
<b>Height</b>	9.5 ~ 15mm	9.5 ~ 15mm	18.5 ~ 26.5 mm	Leg 27.5
<b>Internal Diameter</b>	15 ± 0.025 16 ± 0.025	127.30 - 0.10	128.30-130.50	128.50-129.50
<b>Outer Diameter</b>	127.30+0.05	152.90+0.05	143.5~148.5	144.0 (leg 186)
<b>Skew Angle</b>	17° to 27°			



12-Pole-B Rotor



12-Pole-U Rotor

### FARRATA FAN DIMENSIONS

	Stator (Register lamination)	Rotor	Die-Casted Rotor (Al. Ring)
<b>Height</b>	17/19/25/ 32/38/45 mm	17/19/25/ 32/38/45 mm	39.0/45.0/52.0/ 58.0/65.0 mm
<b>Internal Diameter</b>	76.20 mm	12.70/16.00 mm	55.5 mm
<b>Outer Diameter</b>	127.80/124.50 mm	76.30 mm	72.50 mm
<b>Skew Angle</b>	22°/27°/20°/20°/18°/16°		



T200 Stator



T200 Rotor



C 24 Stator



Rotor

### VENTILATION & EXHAUST

	Stator	Rotor
<b>Internal Diameter</b>	44.50+0.05 mm	8-0.05 mm
<b>Outer Diameter</b>	76.00-0.05 mm	44.50+0.10/0.15 mm



Venti Stator



Rotor

## TABLE PEDESTAL WALL FAN MOTOR COMPONENTS

(Available in Three Slot Variants)



Stator

TABLE PEDESTAL WALL FAN MOTORS		
	Stator	Rotor
Stack Height	Up to 55 mm	
Internal Diameter	44 & 46 mm	8 mm
Outer Diameter	75 mm	44 & 46 mm



Rotor

## BRUSHLESS DC MOTOR STAMPING

### (A). LINEAR LAMINATION

BLDC linear laminations are pivotal in brushless DC linear motors. This design facilitates high yield progressive tools with best achievable slot fill ratio.



### (B). BLDC CEILING FAN STAMPING

Brushless DC motors are gaining significant traction in the Motor industry because of its high efficiency at wide range of speeds and torque.

FEATURES: Auto Stitch, Numerous slot & peripheral geometries

APPLICATIONS: Ceiling Fans



Stator

BRUSHLESS DC MOTORS	
Internal Diameter	16.00±0.025 mm
Outer Diameter	132.60 mm



Stator



BLDC Wound Stator

### (C). SHADED POLE MOTOR COMPONENTS

Shaded Pole Motors are preferred wherever losses due to low efficiency get compensated by low productions. These motors are cheaper to produce and are used for applications such as Blowers, Conveyors, Ventilation etc.

FEATURES: Auto Stitch, Numerous slot & peripheral geometries

APPLICATIONS: Cooler kit



Stator

SHADED POLE MOTORS		
	Stator	Rotor
Stack Height	Up to 55 mm	
Internal Diameter	50.00±0.10 mm	8-0.02 mm
Outer Diameter	89.00-0.05 mm	50.00+0.10/0.17 mm



Rotor

## (D). UNIVERSAL MOTOR STAMPING

The Universal Motor is a type of electric motor that can operate on either AC or DC power and uses an electromagnet as its stator to create its magnetic field. Universal motors have high starting torque, can run at high speed, and are lightweight and compact.

FEATURES: Auto Stitch, Numerous slot & peripheral geometries

APPLICATIONS: Mixer Grinder



Stator

UNIVERSAL MOTORS		
	Stator	Rotor
Stack Height	Up to 55 mm	
Internal Diameter	46.90+0.05 mm	8-11 mm
Outer Diameter	89 mm	46-0.03 mm



Stator



Rotor

## OUR SPECIALTIES

### ★ AUTO STITCHED RESISTOR LAMINATION



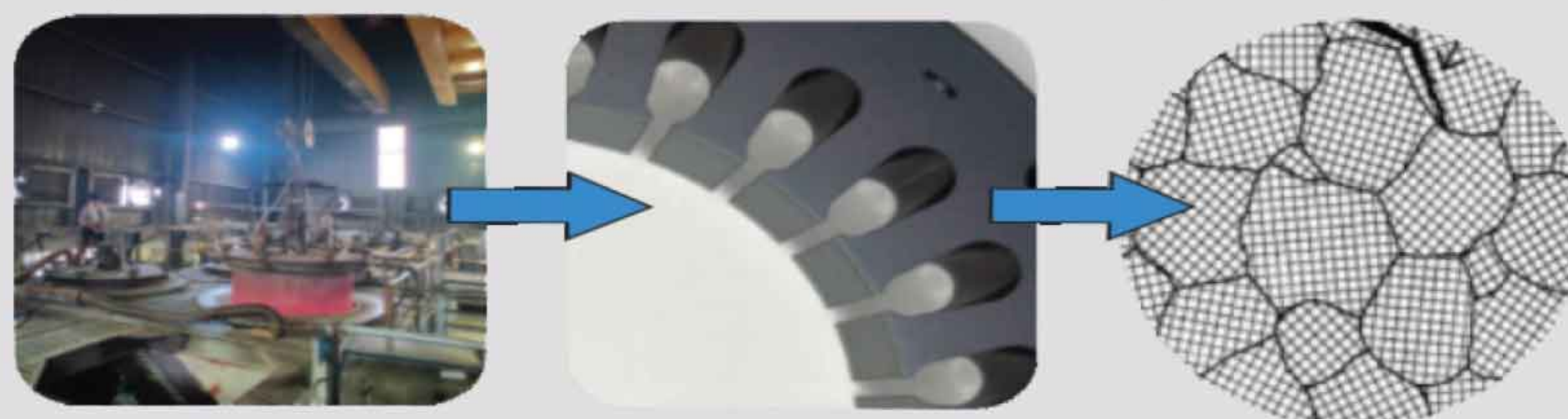
### ★ AUTO STITCH



### ★ SKEW ANGLE



### ★ HI - PERM (BLUING + STRESS RELIEF)



Bluing

Desirable grain structure

### ★ IN-HOUSE PRESSURE DIE CASTING TOOL DEVELOPMENT

### ★ STRATEGIC PARTNERS OVERSEAS FOR PROGRESSIVE STAMPING TOOL DEVELOPMENT

### ★ ON TIME DELIVERY

# THE COMPANY

## VISION

Our vision is to re-define current Indian manufacturing landscape by being the first movers/adopters in both technical and cultural aspects. We believe in embracing innovative leadership and creative teamwork to reap the best benefits for our stakeholders.



## CONTACT US

+91 9871722954  
+91 9717001943  
sales@asaindus.com

### CORPORATE OFFICE

C-16, Sector 6, Noida 201301,  
Distt.Gautam Buddha Nagar, Uttarpradesh

#### UNIT -1

B-09, Sector 85,  
Noida 201305,  
Distt.Gautam Buddha Nagar,  
Uttarpradesh

#### UNIT -2

A-02, Sector 87,  
Noida 201305,  
Distt.Gautam Buddha Nagar,  
Uttarpradesh

#### UNIT -4

Plot No. 181,  
Industrial Park, Tuniki  
Bollaram, Hyderabad,  
Telangana, 502279

AN ISO 9001:2015 CERTIFIED COMPANY